

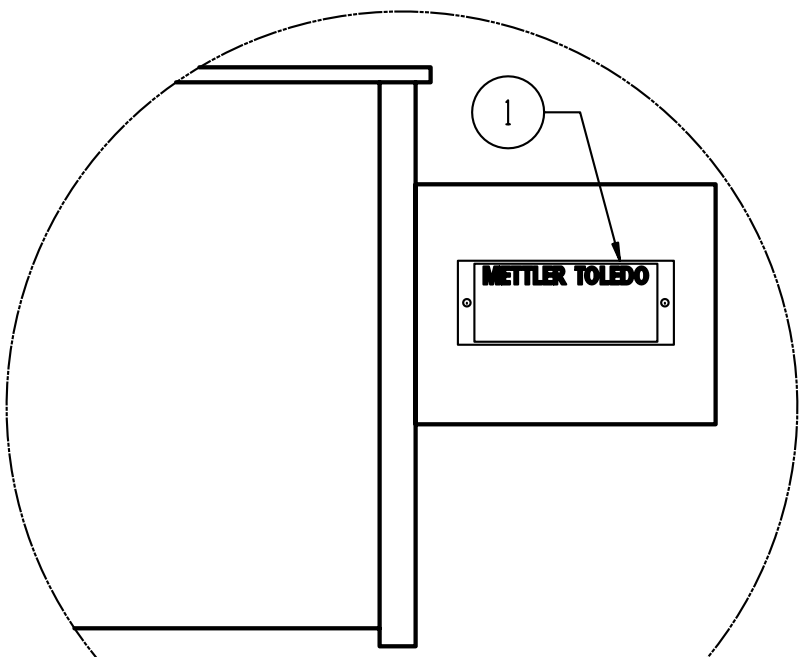
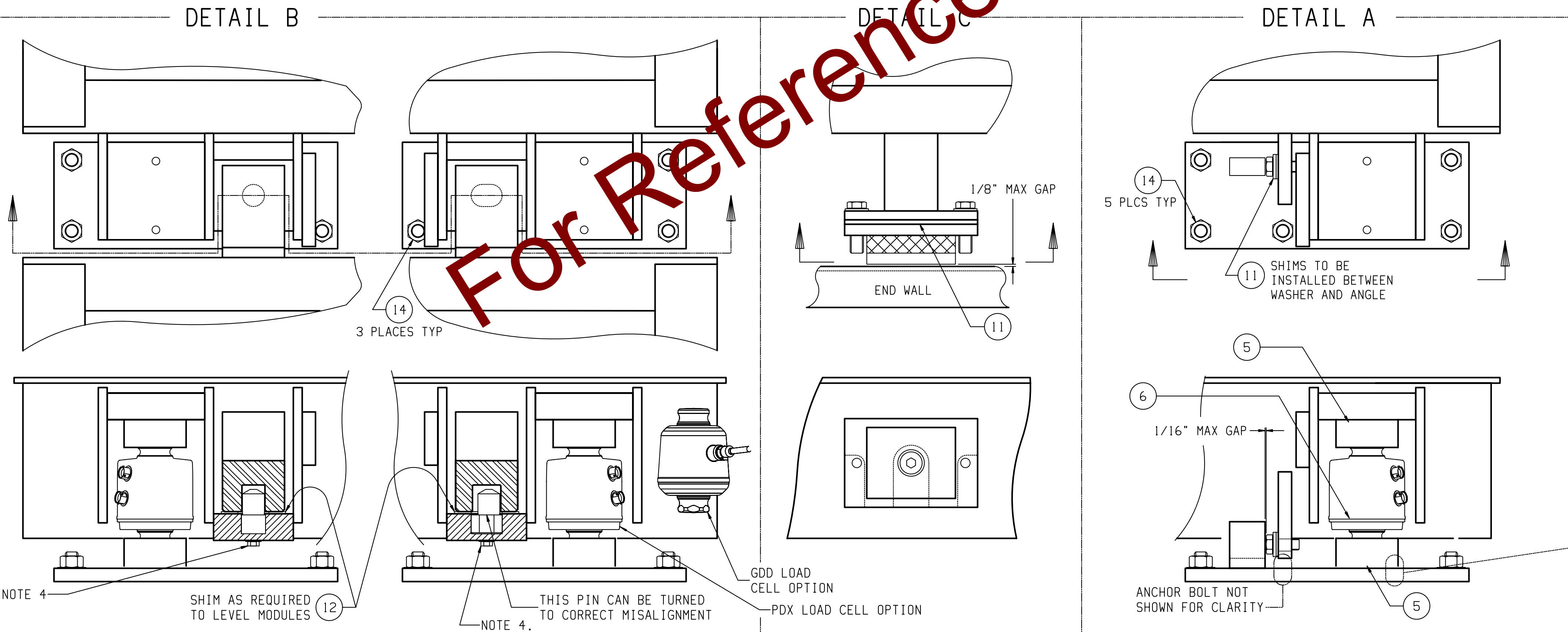
MODULE COMBINATIONS								DIMENSIONAL CHART										
SCALE SIZE	FIRST REF "D" DIM	MIDDLE REF "E" DIM	MIDDLE REF "F" DIM	MIDDLE REF "G" DIM	MIDDLE REF "H" DIM	MIDDLE REF "I" DIM	TERMINAL REF "J" DIM	"A" FDN LENGTH	"B" OVERALL LENGTH	"C"	"D"	"E"	"F"	"G"	"H"	"I"	"J"	VARIANCE FROM STD LENGTH
110'	17.5'	15'	15'	15'	15'	15'	17.5'	109' 9 1/2"	109' 8 1/4"	109' 1 1/2"	17'-4 1/2"	14'-10 1/2"	14'-10 1/2"	14'-10 1/2"	17'-10 1/2"	14'-10 1/2"	17'-4 1/2"	NONE
115'	17.5'	17.5'	15'	15'	15'	17.5'	17.5'	114' 9 1/2"	114' 8 1/4"	114' 1 1/2"	17'-4 1/2"	17'-4 1/2"	14'-10 1/2"	14'-10 1/2"	17'-10 1/2"	17'-4 1/2"	17'-4 1/2"	NONE
120'	17.5'	17.5'	17.5'	15'	17.5'	17.5'	17.5'	119' 9 1/2"	119' 8 1/4"	119' 1 1/2"	17'-4 1/2"	17'-4 1/2"	17'-4 1/2"	14'-10 1/2"	17'-4 1/2"	17'-4 1/2"	17'-4 1/2"	NONE
122.5'	17.5'	17.5'	17.5'	17.5'	17.5'	17.5'	17.5'	122' 3 1/2"	122' 2 1/4"	121' 7 1/2"	17'-4 1/2"	17'-4 1/2"	17'-4 1/2"	17'-4 1/2"	17'-4 1/2"	17'-4 1/2"	17'-4 1/2"	NONE

NOTES:

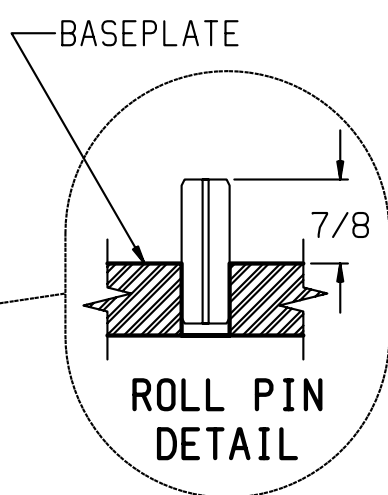
- THE FOUNDATION LENGTH TOLERANCE IS -0" +1". (DIMENSION "A")
END BUMPER STRIKE PLATES ARE REQUIRED. SEE FOUNDATION DRAWING FOR STRIKE PLATE DETAIL.
USE EXISTING FOUNDATION LENGTH TO SELECT APPROPRIATE SCALE LENGTH WHEN FLUSH CASTING STRIKE PLATES WITH NON-SHRINK EPOXY GROUT.
SUBTRACT 1.5" FROM EXISTING FOUNDATION LENGTH WHEN BOLTING 3/4" BUMPER STRIKE PLATES TO THE END WALLS.
NOTE: BOLTING BUMPER STRIKE PLATES TO THE END WALL WILL INCREASE THE END GAPS AND ACCELERATE DEBRIS BUILD-UP IN MOST APPLICATIONS.
- APPLY LOCTITE #242 TO ALL GAP COVER BOLTS.
- APPLY A 1/4" BEAD OF DIELECTRIC COMPOUND IN THE MALE CONNECTOR OF THE LOAD CELL BEFORE FINAL CONNECTION.
- CLEAN LOAD CELL CONNECTOR WITH 68004258 CONNECTOR CLEANER IF DIELECTRIC COMPOUND BECOMES CONTAMINATED.
REAPPLY NEW COMPOUND TO THE CONNECTOR.
- APPLY LOCTITE #242 TO COUPLER PIN BOLTS AND TORQUE 1/3 TURN PAST SNUG. (ONLY IF COUPLER PINS ARE REMOVED.)

NOTES FOR HAZARDOUS AREA WIRING:

- H1. THE HAZARDOUS AREA WIRING AND LIGHTNING PROTECTION KIT IS SPECIFIC FOR THE SUPPLY VOLTAGE AND THE INDICATOR USED.
IT MUST BE INCLUDED FOR INTRINSICALLY SAFE COMPLIANCE IN HAZARDOUS LOCATIONS.



SECTION D-D
BY METTLER TOLEDO: DRILL TWO #29 HOLES IN SUPPORT TUBE AND FASTEN DATA PLATE WITH 1/8" ALUMINUM AB4-4 POP RIVETS.



15	1	68004258	MTX CLEANER, CONNECTOR
14	56	68004325	ANCHOR BOLT EXPANSION 3/4-10 x 5.5
13	1	30236781	INSTALL KOP VTXX1 FLUIDS 5-7 MODS
12	3	30465416	COUPLING KOP 7560
11	1	30465415	CHECKING KOP 7560
10	1	30465504 30465503	KOP PDX WIRING 16LC D2J13 KOP GDD WIRING VTXX1/7560 7-MOD
9	1	TERM	STANDARD TERM MODULE
8	5	MID	STANDARD MIDDLE MODULE
7	1	FIRST	STANDARD FIRST MODULE
6	16	42904891 72236271	LOAD CELL, PDX, 50+ LOAD CELL, GDD, 30+
5	8	30465438 30465439	LOAD CELL ASSEMBLY 7560 KOP PDX 2LC LOAD CELL ASSEMBLY 7560 KOP GDD 2LC
4	2	68004241	BUMPER BASEPLATE RIGHT
3	2	68004240	BUMPER BASEPLATE LEFT
2	12	68004239	BASEPLATE
1	1	61071325	DATA PLATE

ITEM	QTY	PART NUMBER	DESCRIPTION
MAJOR BILL OF MATERIAL			
REV	CHANGE	BY	DATE
SCALE	.25		
DATE	02/26/18		
DRN NLD	APPD		
TITLE	7560SD GLO PDX/GDD 7-MOD		
UNLESS OTHERWISE SPECIFIED, ALL DIMENSIONS ARE IN INCHES, AND DIMENSIONAL TOLERANCES ARE:			
FRACTIONAL	DECIMAL	ANGULAR	
±1/32	.XX ±.02	±.5°	
	.XXX ±.005		
THIS PRINT IS FURNISHED WITH THE UNDERSTANDING THAT THE ESSENCE THEREOF WILL NOT BE REPRODUCED IN WHOLE OR IN PART WITHOUT WRITTEN AUTHORIZATION OF METTLER-TOLEDO, LLC. ALL DESIGNS ARE THE PROPERTY OF METTLER-TOLEDO, LLC. AND WILL BE PROTECTED BY PATENTS.			
61809017			REV